

The ADV 160 vertical centrifugal pump is high-performance pump for fixed installations with pump immersed directly in the tank and operated by a direct-drive electric motor (max 3000 rpm) for fast fluid drainage.



EAC CE

Technical data

Construction Materials	PP - PVDF
Max. Capacity	55 m ³ /h
Max Head	32 m
Max Temperature	PP 60°C - PVDF 90°C
Max Viscosity	500 cPs
Max.diameter of passing solids	9 mm
Intake / delivery connections	2 1/2 " F x 2" M - DN65 x DN50 On request
Motor	10 HP 380V3/50Hz / 2800 rpm

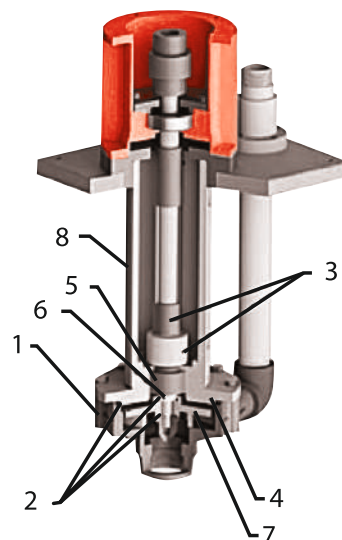
Description

Vertical centrifugal pump with bracket ADV 160 is made of thermoplastic materials (PP and PVDF) and are suitable to pump high corrosive liquids with solids. Pump series ADV are available with different column lengths from 500 mm to 2000 mm.

The open impeller allows pumping even with very dirty liquids having viscosity of up to 500 cps (at 20°C) and small suspended solids.

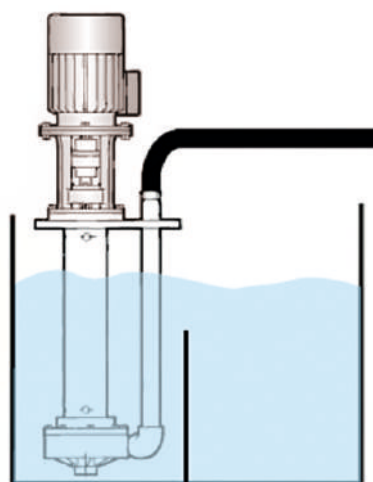
ADV 160 vertical centrifugal pump consists of a solid pump casing and a column fitted to the base plate supporting the lantern that in turn supports the electric motor. The direct-drive motor is connected by a flexible coupling on the pump shaft. The open impeller is fitted to the other end of the shaft that is supported by a radial bearing. This pump's special design allows the motor to be stripped without the need to disconnect the pump from the system

POS	DESCRIPTION	MATERIAL
1	PUMP HEAD	PP or PVDF
2	O-RING	EPDM or VITON
3	SHAFT COVERING GUIDE	PP or PVDF
4	COVER	PP or PVDF
5	BUSHING	PTFEC
6	WEAR BUSHING	Al_2O_3
7	IMPELLER	PP or PVDF
8	COLUMN	PP or PVDF



Installation

ADV Vertical centrifugal pumps should only be installed with the shaft positioned vertically and the pump immersed in the tank. Suitable devices should be fitted to avoid dry running and /or the formation of a vortex and possible air suction. These pumps should only operate whilst filled. Running dry or with air bubbles can cause damage to the internal bushing



Application sectors

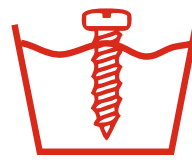
Chemical Industry, Galvanic & electronic Industry,
Water Treatment Industry



CHEMICAL INDUSTRY

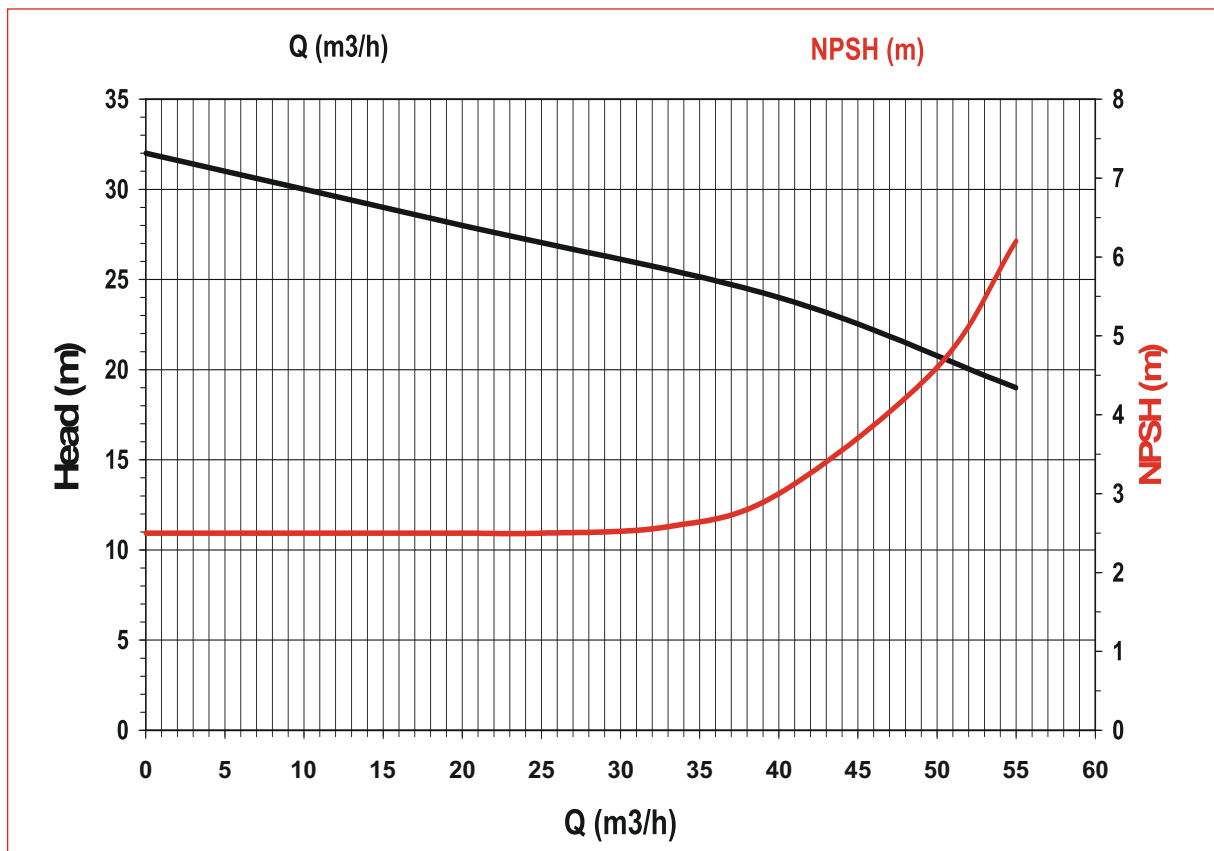


WATER AND SLUDGE
TREATMENT



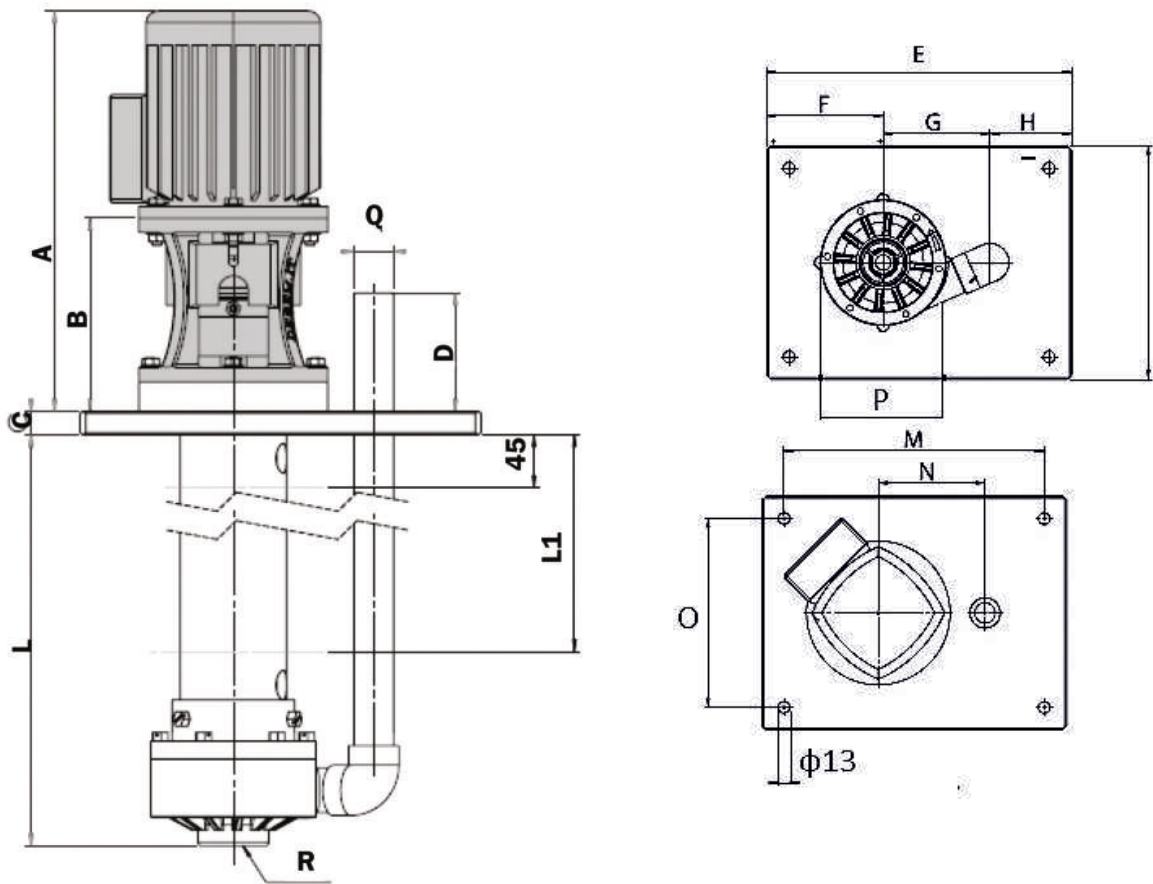
GALVANIC AND ELECTRONIC
INDUSTRY

Performance



Dimensions

Column length : 500 - 1250 mm

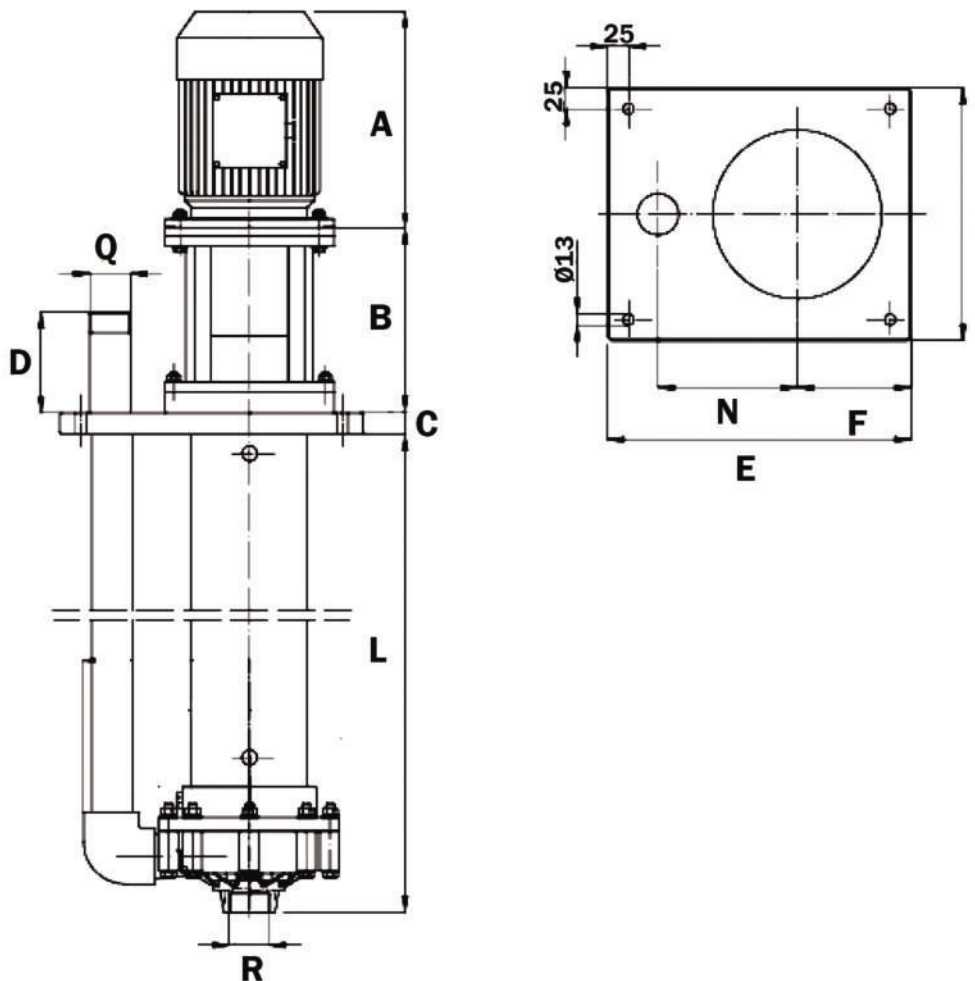


Motor Weight	61 kg
Column Weight L=500 mm	PP 28 Kg - PVDF 30 Kg
Column Weight L=800 mm	PP 31 Kg - PVDF 33 Kg
Column Weight L=1000 mm	PP 33 Kg - PVDF 35 Kg
Column Weight L=1250 mm	PP 36 Kg - PVDF 38 Kg

Pump Type	Motor Flange B5	HP	Rpm	Dimensions -mm-															
				A	B	L	C	D	E	F	G	H	I	M	N	O	P	Q	R
ADV 160	132	10	2800	702	303	500-1250	25	130	480	170	215	95	380	430	215	330	Φ275	2"	2 1/2"

Dimensions

Column length : 1500 - 2000 mm



Motor Weight	61 kg
Column Weight L=1500 mm	PP 39 Kg - PVDF 41 Kg
Column Weight L=2000 mm	PP 45 Kg - PVDF 47 Kg

Pump Type	Motor Flange B5	HP	Rpm	Dimensions -mm-										
				A	B	L	C	D	E	F	I	N	Q	R
ADV 160	132	10	2800	420	250	1500-2000	25	100	480	170	380	215	2 "	2 1/2"



We Make The Difference

Production Plant - Greece

Inofita Industrial area
59th km Nat.Road Athens - Lamia
GR 320 11 Inofita Viotia, Greece
Tel: +30 215 215 9520, +30 215 215 9580
email: sales@alphadynamic.eu
www.alphadynamic.eu

Sales Office - England

Rockleigh House, 37 Burton Road
Ashby de la Zouch, Leicestershire
LE65 2LF - United Kingdom (UK)
Registered in ENGLAND & WALES
Registration number 09706219
email: sales@alphadynamic.eu
www.alphadynamic.eu