

## PAS Stainless steel Self-priming pump



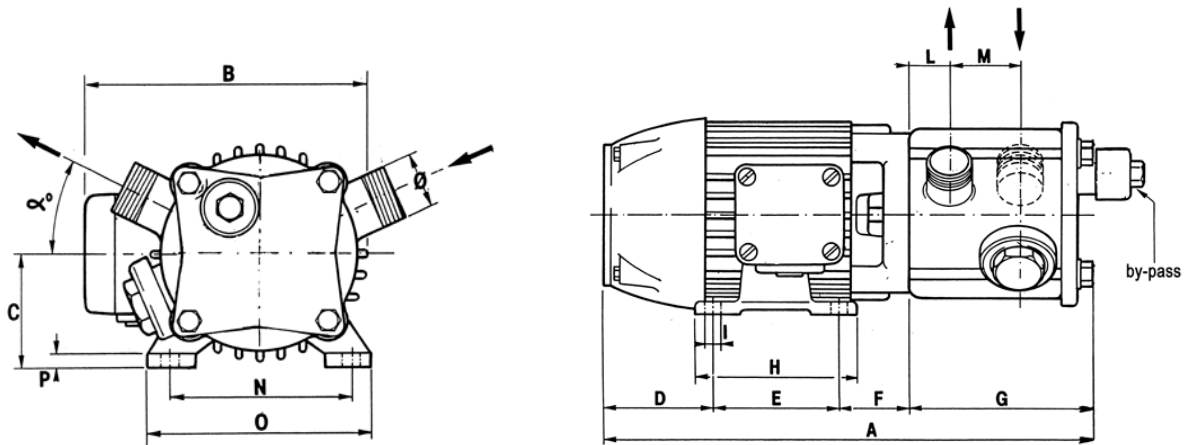
### Benefits

- Priming at a depth of up to 5 m with the pump filled
- Flow reversibility available on request
- Suction filter fitted to collect any impurity that may be present in the liquid
- Suitable for handling aggressive liquids
- Fitted with a bypass to partly adjust the flow rate / head
- High thickness steel (3mm) which ensures a higher mechanical and corrosion resistance, and therefore a longer life
- High hydraulic efficiency
- Explosion proof motors can be provided to pump flammable liquids
- Microcast impeller from AISI 304/306 stainless steel
- Mechanical seal with NBR, FPM or PTFE elastomers

# Technical Specifications

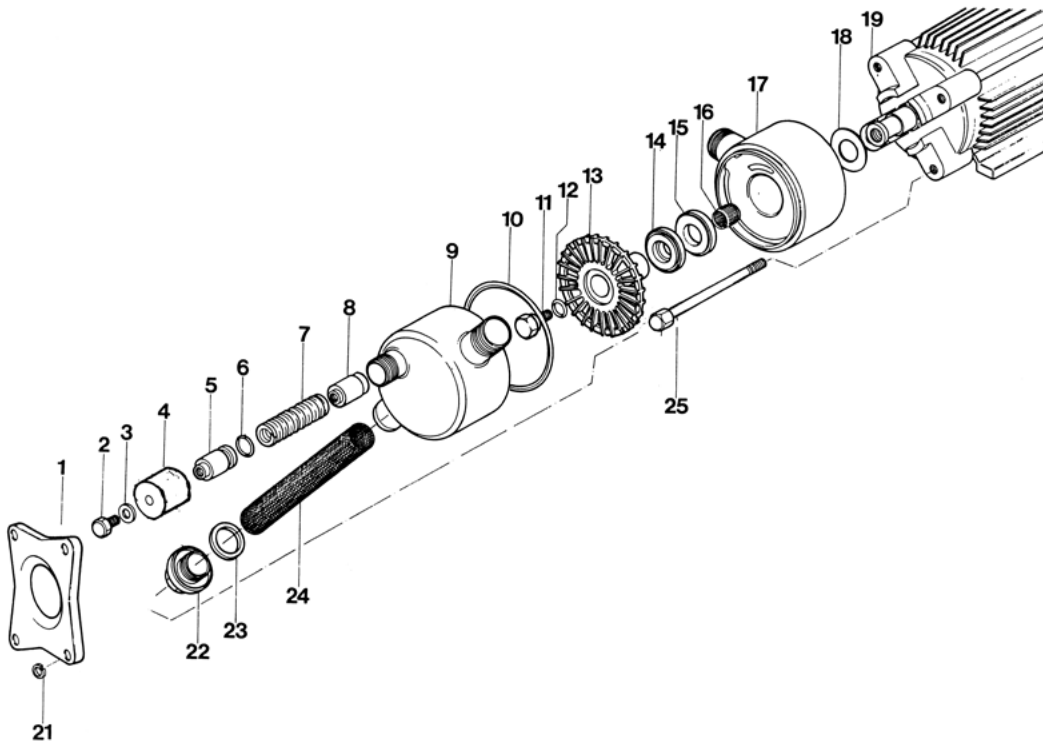
	MOTOR			FLOW RATE [lit/min] ± 5%															
	HP	RPM	TYPE	0 mt	5 mt	10 mt	12 mt	15 mt	20 mt	22 mt	25 mt	30 mt	35 mt	40 mt	45 mt	50 mt	55 mt		60 mt
A-110	0.3	1400	MF	44	28	13	7	-	-	-	-	-	-	-	-	-	-	-	Ø 1" gas male thread
	0.5	1400	TF	44	28	13	7	-	-	-	-	-	-	-	-	-	-	-	
	0.5	2800	TF	76	64	53	49	42	30	-	-	-	-	-	-	-	-	-	
	0.7 5	2800	TF	79	68	57	53	47	36	32	25	15	-	-	-	-	-	-	
A-130	0.7 5	1400	TF	79	67	53	46	35	5	-	-	-	-	-	-	-	-	-	Ø 1 ¼" g as male thread
	1.5	2800	MF	115	102	88	81	71	50	-	-	-	-	-	-	-	-	-	
	2	2800	TF	124	114	104	100	94	83	79	72	62	51	-	-	-	-	-	
	2.5	2800	TF	129	120	110	106	100	90	86	80	69	58	47	35	-	-	-	
A-150	2.5	1400	TF	136	121	102	93	76	34	9	-	-	-	-	-	-	-	-	Ø 1 ½" g as male thread
	4.5	2800	TF	245	231	217	211	202	187	181	172	156	140	-	-	-	-	-	
	6	2800	TF	241	229	217	212	204	190	185	176	161	144	127	107	86	60	29	

# Dimensions



MOD	MOTOR		Dimensions [mm]														α	Ø
	HP	RPM	A	B	C	D	E	F	G	H	I	L	M	N	O	P	[deg]	
A-110	0.3	1400	345	182	72	75	90	50	130	101	8	27	58	112	137	10	25°	1"
	0.5	1400		188														
	0.5	2800		182														
	0.75	2800		188														
A-130	0.75	1400	400	208	80	87	100	55	158	122	10	30	74	125	155	10	25°	1 ¼"
	2	2800	410	225	90	90	100	62	158	125	10	30	74	140	175	12	25°	
	2.5	2800	435	225	90	90	125	62	158	150	10	30	74	140	172	13	25°	
A-150	2.5	1400	485	255	100	97	140	73	175	170	12	41	71	160	198	13	25°	1 ½"
	4.5	2800	518	280	112	108	140	95	175	172	13	41	71	190	227	17	25°	
	6	2800	520	280	112	110	140	95	175	172	13	41	71	190	227	17	25°	

# Spare part list drawing



REF	DESCRIPTION	MATERIALS
1	Flange	Stainless steel
2	By-pass cap screw	Stainless steel
3	Washer	Stainless Steel
4	By-pass cap	Stainless Steel
5	Piston	Stainless Steel
6	Piston oring	NBR or FPM
7	Spring	Stainless Steel
8	Valve	Stainless Steel
9	Casing suction side	AISI 304 or 316 Stainless Steel
10	Body seal ring	NBR or FPM
11	Impeller screw	Stainless Steel
12	Impeller screw oring	NBR or FPM
13	Impeller	AISI 304 or 316 Stainless Steel
14	Seal rotating part	Graphite, stainless steel , NBR or FPM or PTFE
15	Seal fixed part	Ceramic NBR or FPM or PTFE
16	Compensation ring	steel
17	Casing delivery side	AISI 304 or 316 Stainless Steel
18	Spacing ring	AISI 304 or 316 Stainless Steel
19	Electric motor	.....
21	Washer	steel
22	Filter cap	AISI 304 or 316 Stainless Steel
23	Filter cap seal	NBR or FPM or PTFE
24	Filter	AISI 304 or 316 Stainless Steel
25	Tie rod	stainless steel