

QUAD Stainless steel Self-priming pump



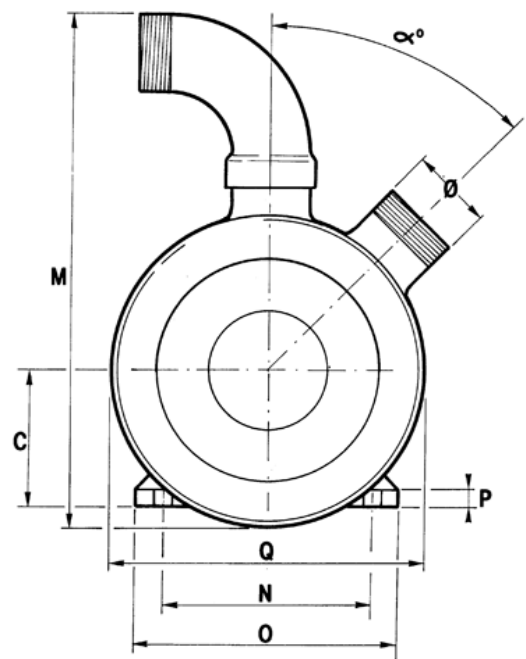
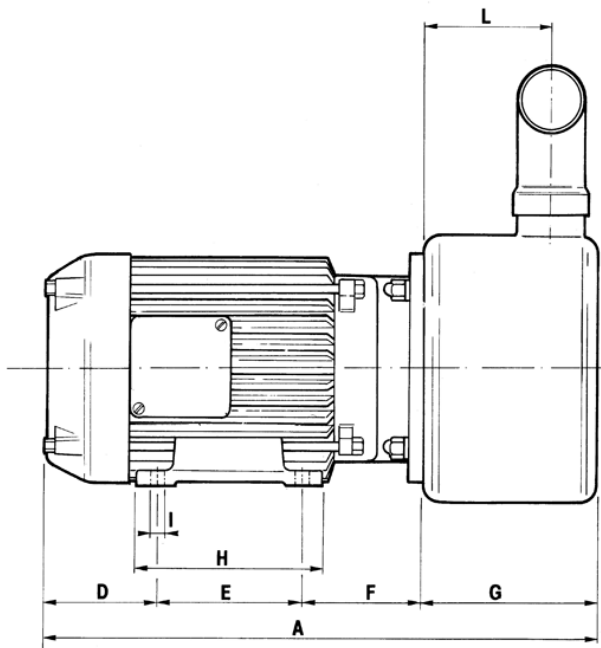
Benefits

- Flow rate up to 750 lt/min
- Head up to 25 mt
- Operating temperature max 110°C
- Operating pressure max 4 bar
- Motors from 4 HP to 7.5 HP - 2800 RPM
- Entirely made of AISI 304/316 high thickness stainless steel
- Suitable for aggressive liquids with suspended solids
- Open-type stainless steel impeller, making it suitable for handling dirty liquids
- Suitable for handling aggressive liquids
- Priming at a depth of up to 5 m with the pump filled
- Explosion proof motors can be provided to pump flammable liquids
- High hydraulic efficiency
- Mechanical seal with NBR, FPM or PTFE elastomers
- On request, pumps can be supplied on a stainless steel carriage fitted with a switch.

Technical Specifications

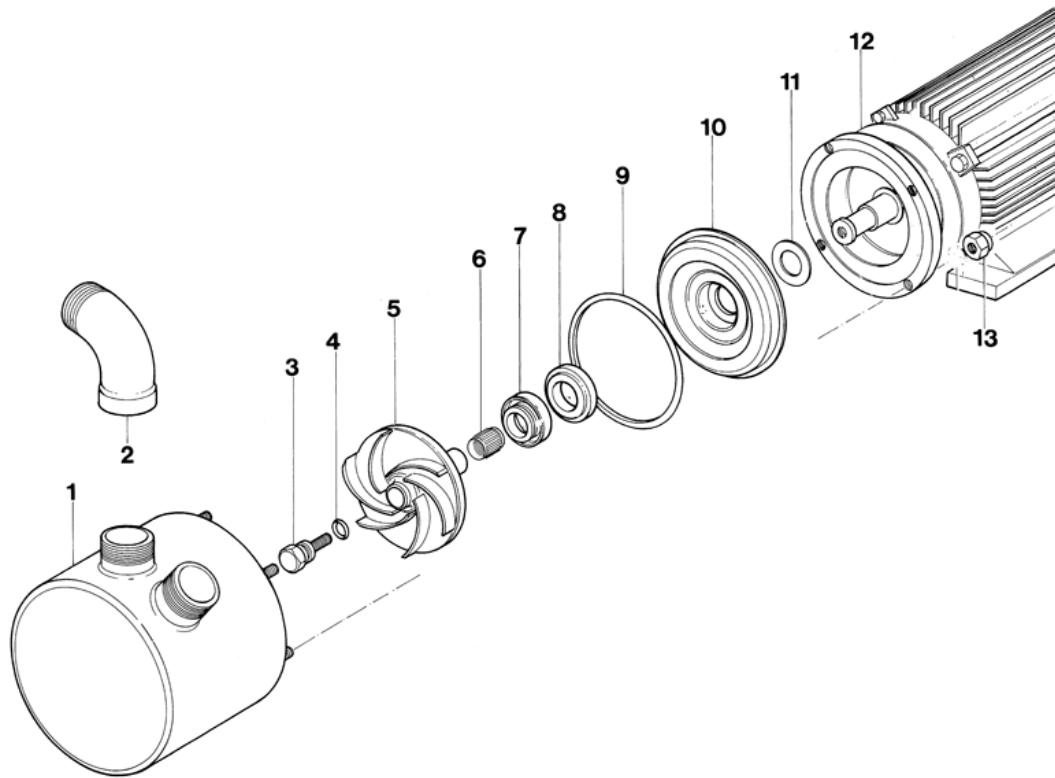
MOD	MOTOR		FLOW RATE [lt/min] ± 5%						Ø PORTS
	HP	RPM	2 mt	5 mt	10 mt	15 mt	20 mt	25 mt	
QUAD 240	4	2800	399	369	314	253	184	102	Ø 2" gas male thread
QUAD 480	5	2800	748	675	552	429	306	184	Ø 2" gas male thread
	7.5	2800	748	675	552	429	306	184	

Dimensions



	MOTOR		Dimensions [mm]														α [deg]	Ø
	HP	RPM	A	C	D	E	F	G	H	I	L	M	N	O	P	Q		
QUAD 240	4	2800	481	100	98	140	98	145	170	16	104	400	160	200	13	240	45°	2"
QUAD 480	5	2800	486	100	98	140	98	150	170	16	104	400	160	200	13	240	45°	2"
	7.5	2800	515	100	120	140	110	150	180	18	104	400	185	220	14	240	45°	

Spare part list drawing



REF	DESCRIPTION	MATERIALS
1	Casing Delivery Side	AISI 304 or 316 Stainless Steel
2	Outlet Bend	AISI 304 or 316 Stainless Steel
3	Impeller Screw	Stainless Steel
4	Impeller Screw O-Ring	NBR or FPM
5	Impeller	AISI 304 or 316 Stainless Steel
6	Compensation Ring	Steel
7	Seal Rotating Part	Graphite, Stainless Steel, NBR or FPM or PTFE
8	Seal Fixed Part	Ceramic, NBR or FPM or PTFE
9	Body Seal Ring	NBR or FPM
10	Seal Disc	AISI 304 or 316 Stainless Steel
11	Spacing Ring	Stainless Steel
12	Electric Motor	-----
13	Lock Nut	Steel