

**Volumetric Stainless Flexible Impeller Pumps**, are mostly suitable for the transfer of delicate, fragile and viscous medium, also with solid parts in suspension.



### Features

- ✓ Immediate priming at a depth of up to 5 meter, even when running dry
- ✓ Flow reversibility
- ✓ Low speed motor, which ensures a gentle pumping action for delicate liquids
- ✓ Continuous and regular pumping action
- ✓ Capacity to handle viscous and solid-laden liquids
- ✓ High thickness steel (3/4mm) which ensures a higher mechanical and corrosion resistance, and therefore a longer life
- ✓ Monobloc pump casing casting for higher strength and a better seal
- ✓ The cleaning and replacement of the mechanical seal and of the impeller are incredibly simple as the pump can be taken apart with ease
- ✓ Flexible impeller made of entirely non-toxic synthetic rubber (Neoprene , NBR , EPDM) and resistant to different acids
- ✓ Mechanical seal made of INOX/ GRAPHITE/ NBR/EPDM or Tungsten/Tungsten/ NBR/EPDM

### Technical data

Body Material	AISI 304L
Impeller	CR, NBR, EPDM
Max. Capacity	3.6 m3/h
Max Head	35 mt
Max Temperature	90°C
Intake / delivery connections	1" BSP M - DN25 DIN 11851 on request
Motor	0.34 HP 380V3 / 50Hz / 900 rpm 0.75 HP 380V3 / 50Hz / 1400 rpm

### The AD Flexible impeller pumps are widely used:



#### In the oenological field

Stemmed grapes, wine, must, e.t.

**In food processing**  
Honey, yogurt, beer, fruit pulp and juice, glycerine, brine, syrups, melted butter, liquid sugar, eggs in liquid form, tomato pulp e.t.c



#### In the chemical industry

Paint, ink, water based glues, rubber latex, glycerine, wax, emulsion starch, liquid for photograph process, industrial discharges, polyelectrolyte, detergents e.t.c

#### In cosmetics industry and in the production of pharmaceutical products

Cleaning lotion, cream, shampoo, liquid soap, e.t.c



### Impeller made of non-toxic rubber

The impeller is made of synthetic rubber (Neoprene, EPDM, NBR) and is entirely non-toxic and resistant to several acids. Our impellers comply with the American FDA regulations related to the handling of food grade liquids



### Pump casing formed as a single piece

All pump casings are constructed from high thickness stainless steel sheet metal, which ensures quality and long life. The pump casings undergo continuous quality controls of the welds and are internally and externally polished to ensure the highest level of hygiene



## Mode of operation - Advantages

### Basic pump characteristics

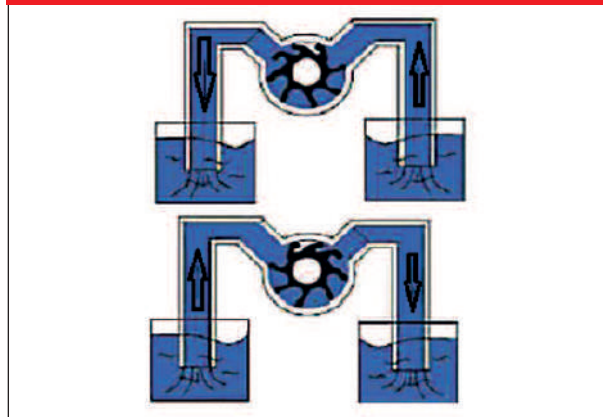
The Positive Displacement Flexible Impeller pumps, defuse the vane at the suction side. As a consequence, an intense vacuum is being created and we have the possibility for automatic suction from a depth of 6 m from a dry position. The vanes at the discharge will slightly bend, with the result being the medium to be transferred towards the exit. That way, we manage the smooth transfer of the medium at the exit without a pulse.

#### Self priming



Self priming of the product up to 6m, even from a dry starting point within a few seconds.

#### Reversible operation



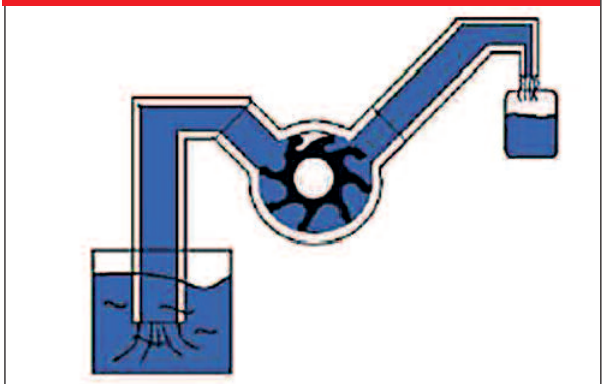
The pump can work in both the 2 directions of operation with interchange of the flow of the liquid inside the network without a problem, as many times as we want with a simple interchange of the motor direction.

#### Suitable for the transfer of delicate and viscous liquids



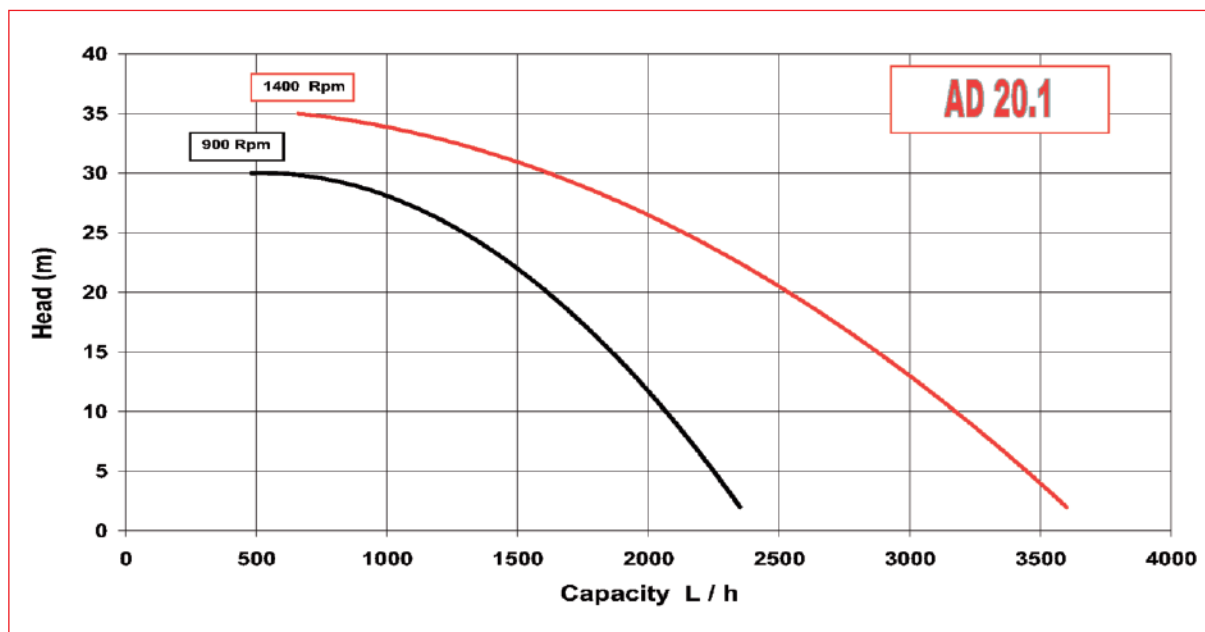
Up to 75.000 cps, even with solid suspension, without any wear out or damage.

#### Smooth and steady pumping of the product without

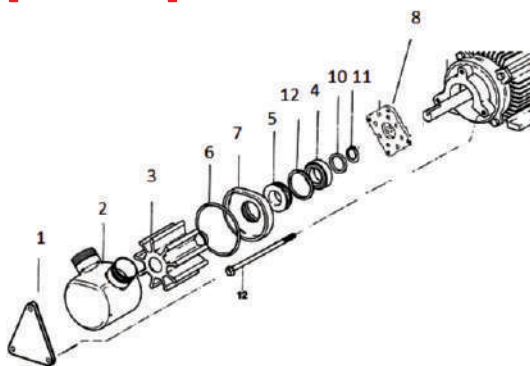


pressure from the spikes (even flow rate is ideal for filling, dosing or filtration)

## Performance curves

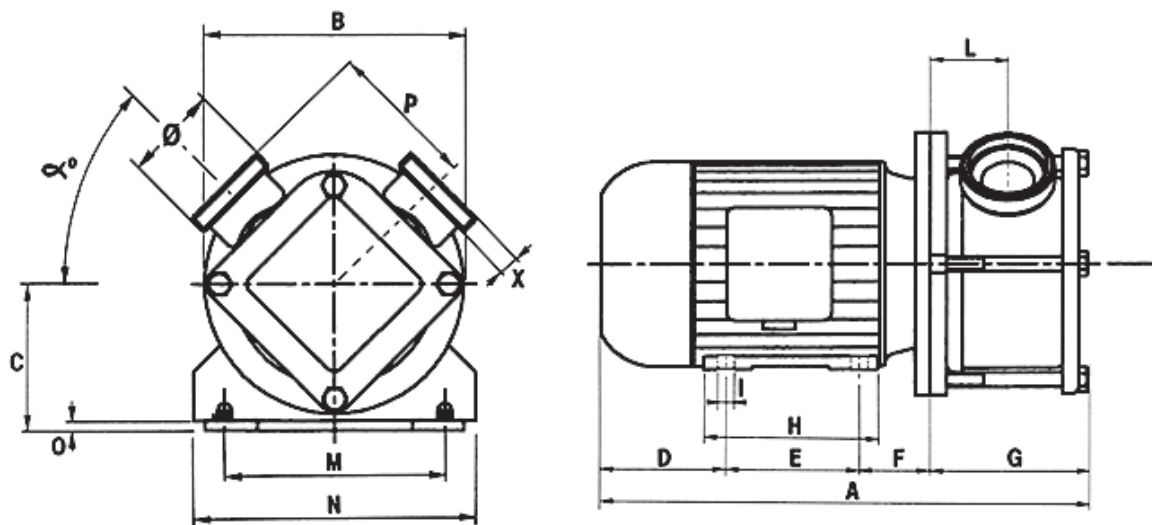


## AD 20.1 spare part list



Pos	DESCRIPTION	MATERIAL
1	Flange	Stainless steel 304L
2	Pump casing	Stainless steel 304L
3	Impeller	CR , EPDM , NBR
4+5	Mechanical seal	Inox/Graphite/NBR/EPDM or Tungsten/Tungsten NBR/EPDM
6	Body seal ring	NBR , EPDM
7	Rear Flange	Stainless steel 304L
8	Flange	Aluminum
9	Tie rod	Stainless steel 304L
10	Spacing Ring	Stainless steel 304L
11	Seeger ring	Steel
12	Elastic Ring	Steel

## Dimensions



TYPE	A	B	C	D	E	F	G	H	I	L	M	N	O	P	X	α°	Ø
AD 20.1	375	160	72	90	90	45	91	105	7	53	112	132	10	56	13	45°	BSP G 1" - DN25 DIN 11851 on request



### **HEADQUARTERS / FACTORY**

59 Km Nat.Road Athens-Lamia  
GR 32011 – Inofita Viotia , Greece  
Commercial Registry 45001607000  
VAT No. EL 999695309  
Tel : +30 215 215 9580 , +30 215 215 9520  
Email: [sales@alphadynamic.eu](mailto:sales@alphadynamic.eu)  
[www.alphadynamic.eu](http://www.alphadynamic.eu)